

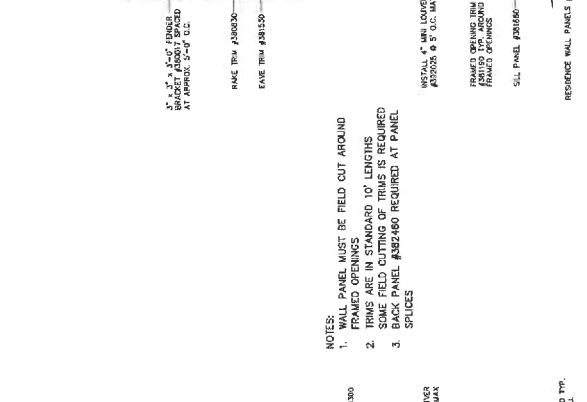
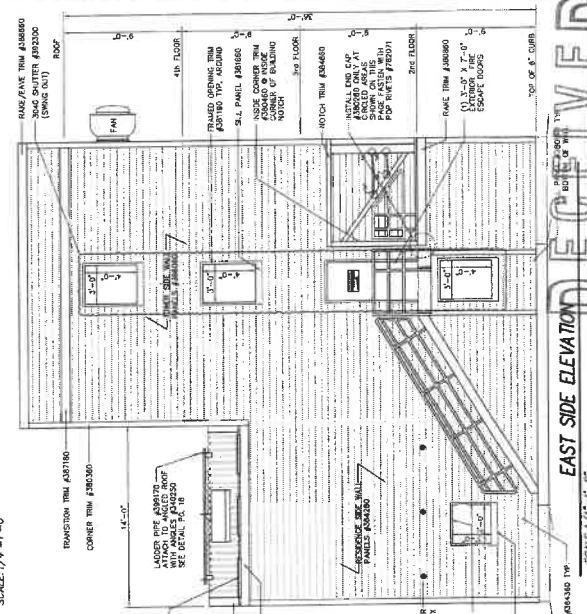
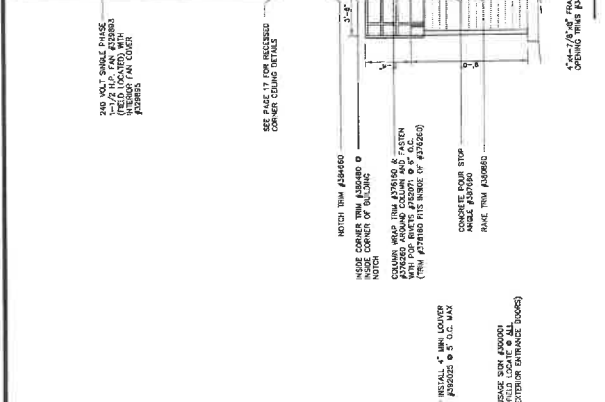
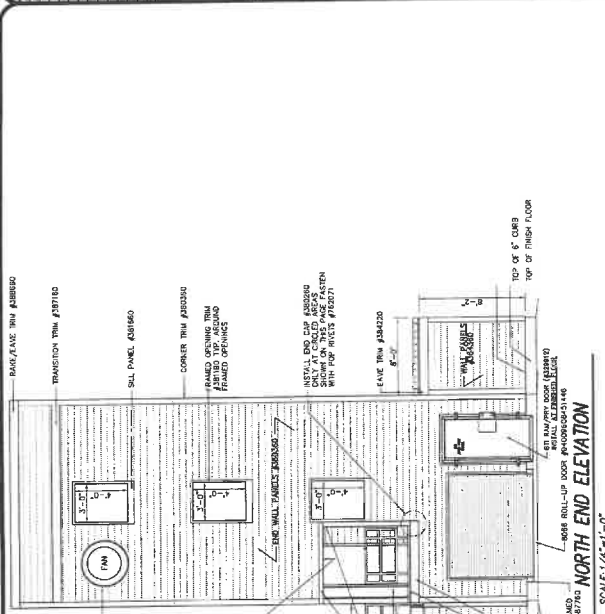
REV. A	8/17/21	SPK
REV. B	8/12/23	DKK
REV. C		
REV. D		
REV. E		
REV. F		
REV. G		
REV. H		
REV. I		
REV. J		
REV. K		
REV. L		
REV. M		
REV. N		
REV. O		
REV. P		
REV. Q		
REV. R		
REV. S		
REV. T		
REV. U		
REV. V		
REV. W		
REV. X		
REV. Y		
REV. Z		

THIS DRAWING AND ALL PARTS HEREOF IS THE EXCLUSIVE PROPERTY OF FIRE FACILITIES, INC.
 314 WILSON ROAD, SUITE 1000, WILSON, NC 27157
 OFFICE: (919) 271-4100 FAX: (919) 654-1843
 AND MAY NOT BE REPRODUCED IN WHOLE OR PART WITHOUT WRITTEN PERMISSION.
 TOLL FREE: (800) 828-2729 FAX: (919) 654-7012
 WWW.FIREFACILITIES.COM, WWW.FIREFACILITIES.COM

FIRE FACILITIES
 STEEL FIRE TRAINING TOWERS

WESCO MODEL WH-3ST
 CUSTOM
 CIE ELUM, WA

Date: JANUARY 15, 2023
 Drawn by: DKK
 Checked by: SPK
 Scale:
 Order No.: #406
 Sheet No.: #406
 02 of 02



- NOTES:
1. WALL PANEL MUST BE FIELD CUT AROUND FRAMED OPENINGS, AROUND 10' LENGTHS
 2. SOME FIELD CUTTING OF TRIMS IS REQUIRED
 3. BACK PANEL #382480 REQUIRED AT PANEL SPLICES

RECEIVED
 FEB 05 2024
 Kittritas County CDS